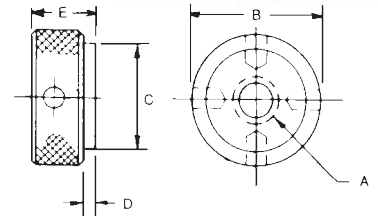


## Knurled Nuts

- ▶ Available in three different materials:
  - carbon steel, black oxide finish
  - stainless steel
  - brass
- ▶ 4 holes allow for additional torque if necessary



Steel PART #	Stainless Steel PART #	Brass PART #	Thread A	B	C	D	E
KN-10	KN-10SS	KN-10B	#10-24	3/4	1/2	1/16	1/4
KN-25	KN-25SS	KN-25B	1/4-20	7/8	5/8	1/16	1/4
KN-31	KN-31SS	KN-31B	5/16-18	1	3/4	3/32	3/8
KN-37	KN-37SS	KN-37B	3/8-16	1	3/4	3/32	3/8
KN-50	KN-50SS	KN-50B	1/2-13	1-1/8	7/8	1/8	7/16
KN-62	KN-62SS	KN-62B	5/8-11	1-3/8	1-1/8	1/8	1/2

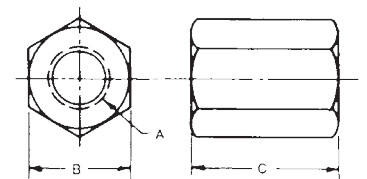


## Extension Nuts

- ▶ Case hardened, black oxide finish
- ▶ Available in inch and metric sizes
- ▶ Commonly known as a coupling nut



INCH				METRIC			
PART #	Thread A	B	C	PART #	Thread A	B	C
EN-6	1/4-20	1/2	5/8	EN-60	M6 x 1.0	13mm	16mm
EN-7	5/16-18	9/16	7/8	EN-8	M8 x 1.25	14.3	22
EN-0	3/8-16	11/16	1	EN-10	M10 x 1.5	17.4	25
EN-9	7/16-14	3/4	1-1/4	EN-12	M12 x 1.75	22.2	32
EN-1	1/2-13	7/8	1-1/4	EN-16	M16 x 2.0	27	41
EN-2	5/8-11	1-1/16	1-5/8	EN-20	M20 x 2.5	32	51
EN-3	3/4-10	1-1/4	1-7/8	EN-24	M24 x 3.0	38	64
EN-4	7/8-9	1-7/16	2-1/4				
EN-5	1-8	1-5/8	2-1/2				
EN-11	1-1/4-7	1-7/8	3"				



## Stainless Steel Hex Head Equalizing Nuts

- ▶ Machined from 303 stainless steel



PART #	Thread F	A	B	C	D	E
3312	#4-40	1/4	1/8	9/32	5/16	3/32
3313	#6-32	1/4	1/8	9/32	5/16	3/32
3375	#8-32	1/4	1/8	5/16	3/8	3/32
3437	#10-24	5/16	5/32	3/8	7/16	1/8
3438	#10-32	5/16	5/32	3/8	7/16	1/8
3500	1/4-20	5/16	5/32	7/16	1/2	1/8
3562	5/16-18	5/16	5/32	1/2	9/16	1/8
3687	3/8-16	3/8	3/16	5/8	11/16	3/16
3689	1/2-13	1/2	1/4	11/16	3/4	1/4

