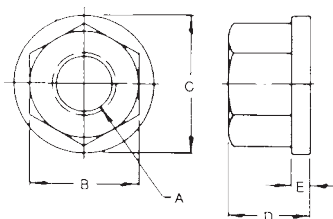


## Nylon Collar Nuts



- Machined from Nylatron GS
- Precision machining assures threads are square with base
- High strength and rigidity
- Superior heat resistance
- Lightweight

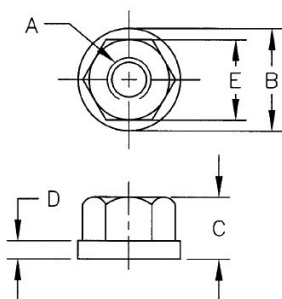


PART #	Thread	B	C	D	E
CN-0N	1/4-20	1/2	5/8	5/16	3/32
CN-00N	5/16-18	9/16	3/4	3/8	3/32
CN-10N	3/8-16	11/16	7/8	1/2	1/8
CN-15N	7/16-14	3/4	1	9/16	5/32
CN-20N	1/2-13	7/8	1-1/8	11/16	5/32
CN-30N	5/8-11	1-1/16	1-3/8	13/16	3/16
CN-40N	3/4-10	1-1/4	1-5/8	1	1/4
CN-50N	7/8-9	1-7/16	1-3/4	1-1/8	1/4
CN-60N	1-8	1-5/8	2	1-1/4	1/4

## Swivel Collar Nuts



- Case hardened carbon steel
- Black oxide finish
- Hex head rotates but collar remains stationary upon contact, two piece construction
- Holds rigidly without marring the workpiece
- Used with set up studs, t-slot bolts, and t-bolts



PART #	A Thread	B	C	D	E
SCN-101	1/4-20	5/8	3/8	1/8	1/2
SCN-102	5/16-18	3/4	7/16	9/64	9/16
SCN-103	3/8-16	7/8	17/32	5/32	11/16
SCN-104	1/2-13	1-1/8	23/32	7/32	7/8
SCN-105	5/8-11	1-3/8	29/32	1/4	1-1/16
SCN-106	3/4-10	1-5/8	1-1/64	9/32	1-1/4
SCN-107	7/8-9	1-3/4	1-1/8	7/16	1-7/16
SCN-108	1-8	2	1-15/64	15/32	1-5/8